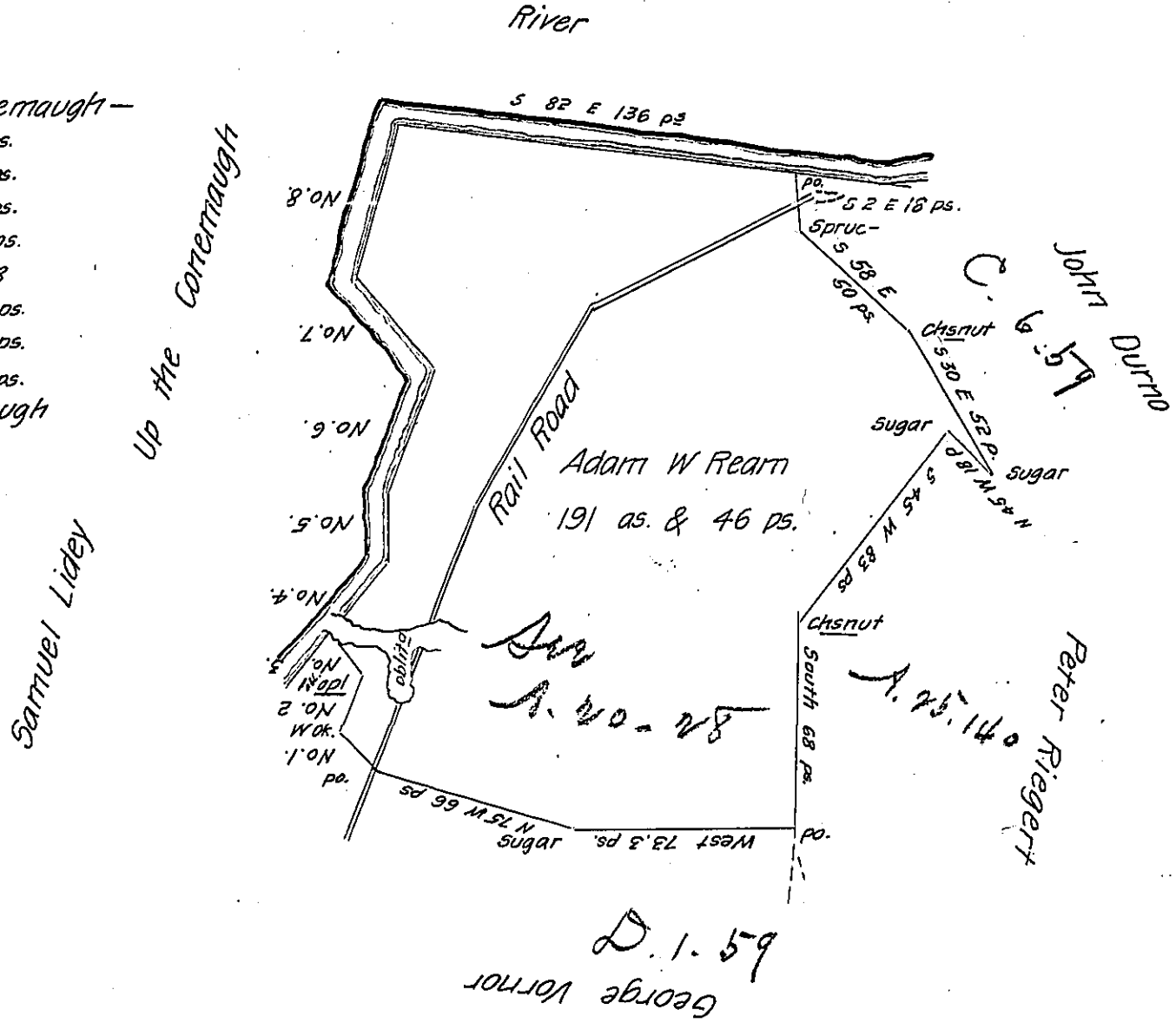


FORM No. 1.

- No. Up the Conemaugh—
 No1 N 47 W 18 ps.
 No2 N 21 E 20 ps.
 No3 N 38 W 16 ps.
 No4 N 40 E 28 ps.
 No5 North 22.8
 No6 N 21 E 42 ps.
 No7 N 44 W 40 ps.
 No8 N 17 E 52 ps.
 With the Conemaugh
 River



Situate on the Conemaugh River in Conemaugh Township Cambria County Containing 191 a^s & 46 ps. with allowance of six per cent for roads &c. Survey'd the 18th day of February 1840 in pursuance of a warrant granted to Adam W. Ream dated the 15th day of *October A.D. 1839 Survey'd by me

James Mageehan D.S.
 of Cambria County

To
 Jacob Sallade Esqr.
 Surveyor General

* Say November

IN TESTIMONY that the above is a copy of the original remaining on file in the Department of Internal Affairs of Pennsylvania, made conformably to an Act of Assembly approved the 16th day of February, 1833, I have hereunto set my Hand and caused the Seal of said Department to be affixed at Harrisburg, this.....twenty.....sixth.....day of.....September.....1906

Loach R. Simon
 Secretary of Internal Affairs.